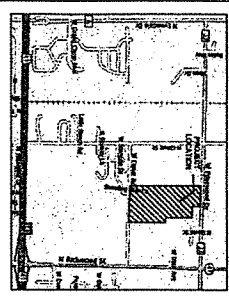
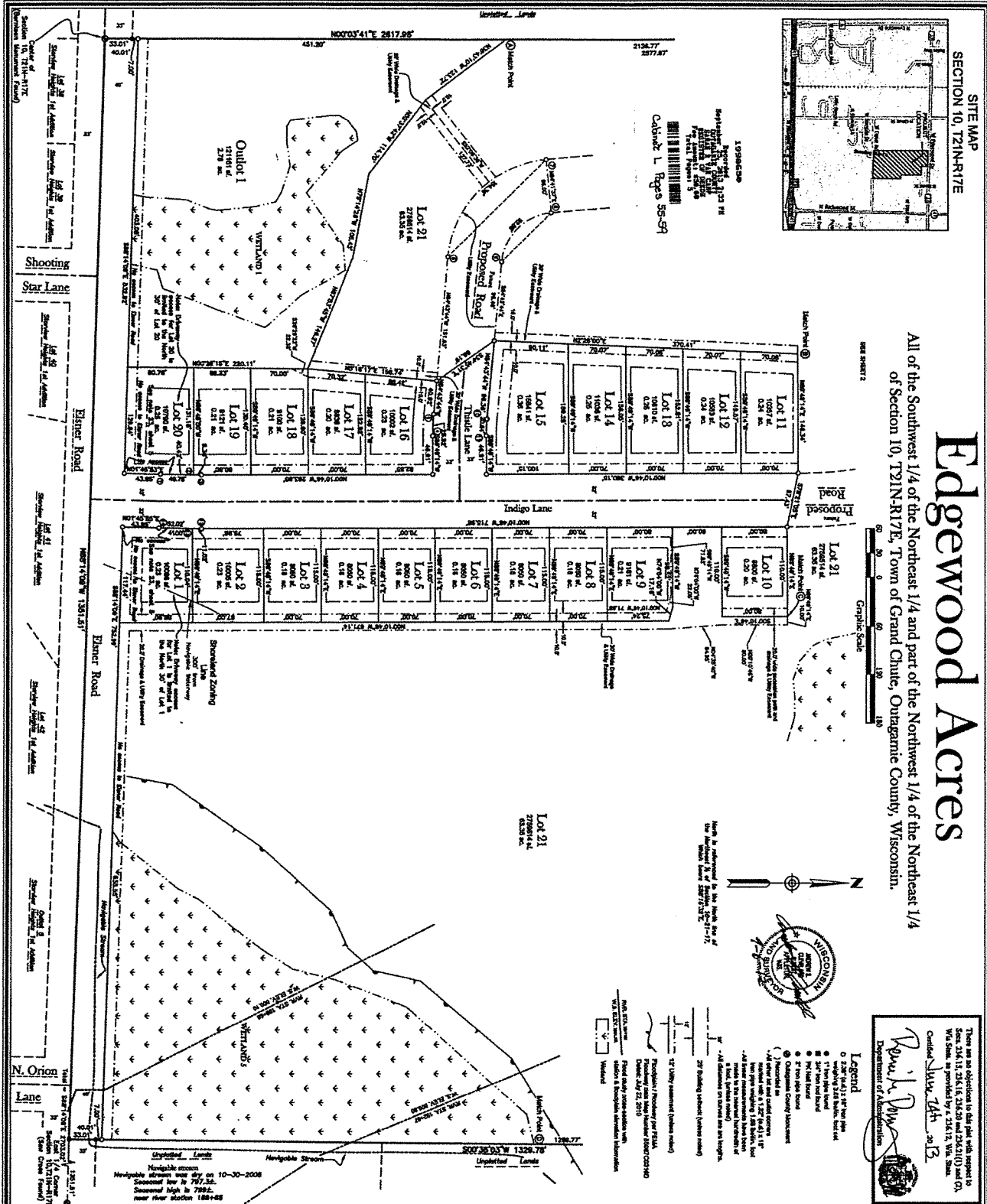


SECTION 10, T21N-R17E

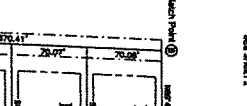


# Edgewood Acres

All of the Southwest 1/4 of the Northeast 1/4 and part of the Northwest 1/4 of the Northeast 1/4 of Section 10, T21N-R17E, Town of Grand Chute, Outagamie County, Wisconsin.



Surveyed by **Robert L. Regis S.S.-S.I.**  
 Date of Survey: **August 22, 2010**



**Legend**  
 ○ 1/2" (2.5 mm) spot  
 ○ 1/4" (6.3 mm) spot  
 ○ 1/8" (3.2 mm) spot  
 ○ 3/16" (4.8 mm) spot  
 ○ 1/16" (1.6 mm) spot  
 ○ 1/32" (0.8 mm) spot  
 ○ 1/64" (0.4 mm) spot  
 ○ 1/128" (0.2 mm) spot  
 ○ 1/256" (0.1 mm) spot  
 ○ 1/512" (0.05 mm) spot  
 ○ 1/1024" (0.025 mm) spot  
 ○ 1/2048" (0.0125 mm) spot  
 ○ 1/4096" (0.00625 mm) spot  
 ○ 1/8192" (0.003125 mm) spot  
 ○ 1/16384" (0.0015625 mm) spot  
 ○ 1/32768" (0.00078125 mm) spot  
 ○ 1/65536" (0.000390625 mm) spot  
 ○ 1/131072" (0.0001953125 mm) spot

There are no objections to this plat with respect to:  
 S.A.S. 15.316, 15.318, 15.320 and 15.321(1) and C.S.  
 Wis. Stat., as provided by S.A.S. 15.317, Wis. Stat.  
 Certified **Shawn Taha**, S.I.  
**Robert L. Regis**  
 Department of Transportation  
 Surveyor

NO.	REVISION DESCRIPTION
1	State, County and Town Reviews

GCW INVESTMENT'S LLC  
**EDGEWOOD ACRES**  
 FINAL PLAT  
 Tax Parcel Number: 10-10-336-00/10-10-338-00

**Mach IV**  
 Engineering & Surveying LLC  
 211 N. Broadway, Suite 114, Green Bay, WI 54303  
 PH: 920-569-5765 Fax: 920-569-5767

DATE: 4-18-2015  
 DRAWN BY: BL  
 CHECKED BY: AHC  
 PROJECT: 0009-02-07  
 SCALE: 1" = 80'  
 SHEET NUMBER  
**1 OF 5**  
 DRAWING NUMBER  
**739**